

## 电梯被动门开关 EDC 系列

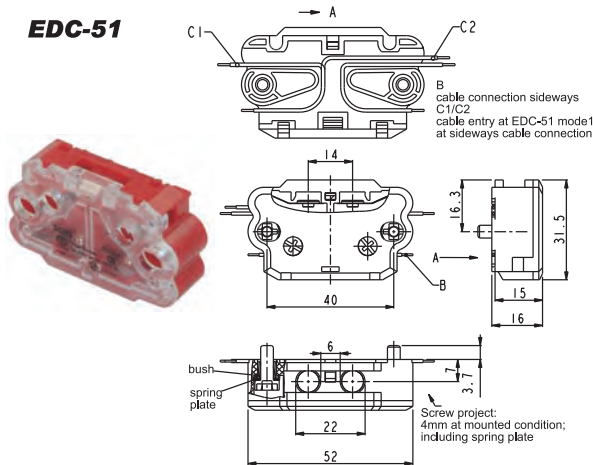
### 特性

- 用于电梯门关闭控制或使用在自动门关闭保护开关
- 自带清洁触点使用寿命更长
- 开关带强制开离功能
- 动作没有声音

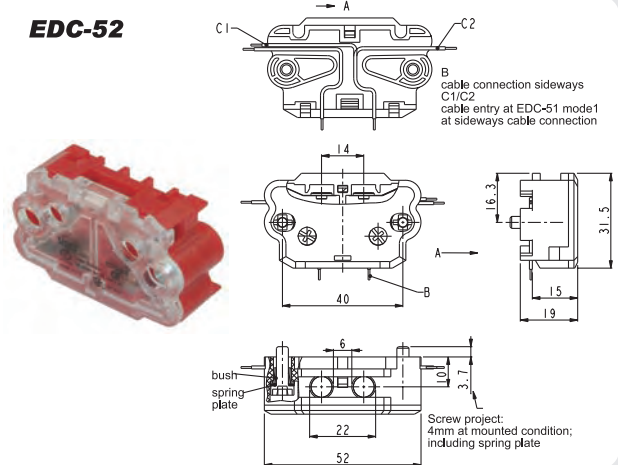
### 技术参数

外壳材料	强化纤维 PA6/66 (UL94-V0)
上盖材料	聚碳酸酯 (UL94-V0) 透明
动作机构	镀银黄铜 PA6/66 (UL94-V0) 外壳
触点材料	镀银铜铆钉
安装	2xM4 螺纹轧件紧固螺丝
触点形式	1NC
接线	M3.5 带防脱出垫片 (导线截面 0.5 to 1.5 mm <sup>2</sup> )
开关频率	30 次/分
额定电流 (Ith)	4A
额定工作电流/电压 (Ie/Ue)	2A/230VAC; 2A/200VDC (根据 EN81-1, -2)
短时电流保护	保险丝 6A gL
环境温度	-30~+80°C (-22~176°F)
寿命	机械 10,000,000 次
保护等级	IP20 to IEC/EN60529
标准	EN81, CAN/CSA-B44.1/ASME-A15.5, VDE 0660

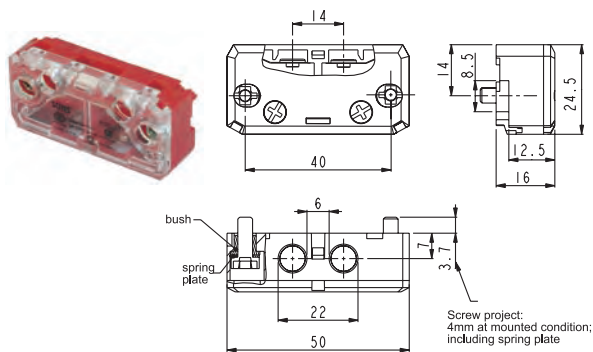
#### EDC-51



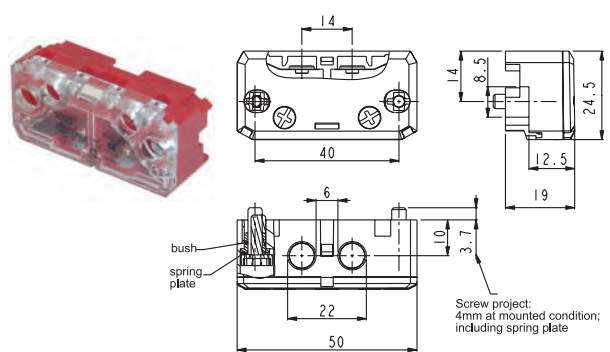
#### EDC-52



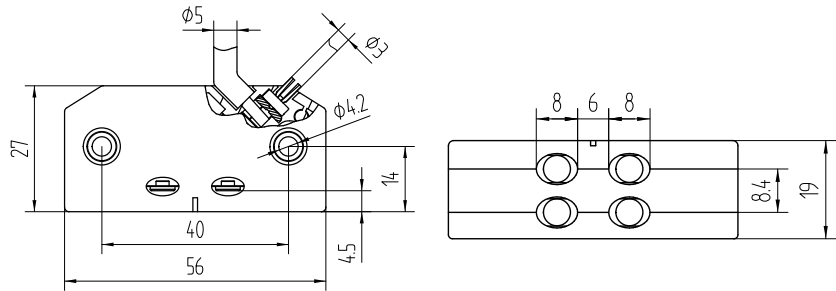
#### EDC-61



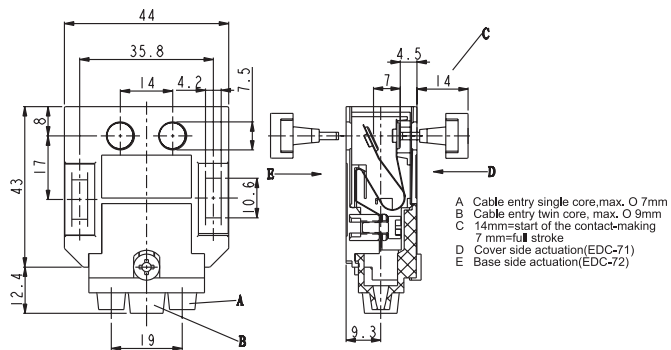
#### EDC-62



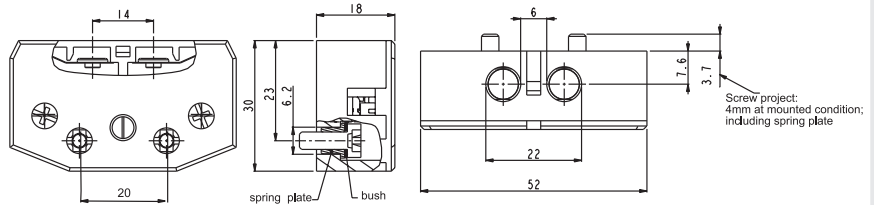
## 电梯被动门开关 EDC 系列



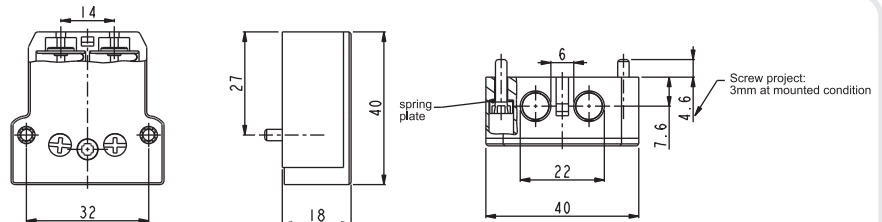
**EDC-63**



**EDC-71 EDC-72**



**EDC-8**



**EDC-92**

## DCA电梯开关插销

用于对应的EDC5,EDC6,EDC7,EDC8,EDC9安全门开关

Technical drawing showing three types of DCA components: DCA-18, DCA-21, and DCA-24. The drawing includes a perspective view of the components and a detailed cross-sectional view with dimensions. The dimensions for the cross-section are: 41 (total length), 26 (distance between pins),  $\varnothing 5$  (pin diameter), 3 (pin offset), 4.3 (height), 12 (width), 2.6 (pin diameter), 14 (width), 1.3 (height), and H (total height). The height specifications are: DCA-18 H = 18mm, DCA-21 H = 21mm, DCA-24 H = 24mm.

**DCA-18 DCA-21 DCA-24**

Technical drawing of the DCA-S component. It includes a perspective view and a cross-sectional view with dimensions: 40 (width), 9 (height), 10 (pin offset), 10 (pin offset), 4.2 (height), 3.5 (height), 7.2 (height), 7 (height), 1.5 (height), 7 (height), 3.5 (height), 14.2 (width), 5 (height), and 12 (height).

**DCA-S**

Technical drawing of the DCA-F component. It includes a perspective view and a cross-sectional view with dimensions: 40 (width), 9.5 (height), 7 (height), 8.3 (height), 31 (height), 9 (height), 2 (height), 14.2 (width), 5 (height), 6 (height), and 9 (height).

**DCA-F**

Technical drawing of the DCA-F2 component. It includes a perspective view and a cross-sectional view with dimensions: 40 (width), 7.2 (height), 8.4 (height), 90° (angle), 32 (height), 40 (height), 14.2 (width), 1.5 (height), 1.2 (height), 5 (height), and 9 (height).

**DCA-F2**

Technical drawing of the DCA-F3 component. It includes a perspective view and a cross-sectional view with dimensions: 5 (height), 15 (height), 7 (height), 30 (width), 4.2 (height), 6 (height), 39.5 (height), 16.2 (width), 7 (height), and 3 (height).

**DCA-F3**

Technical drawing of the DCA-18T component. It includes a perspective view and a cross-sectional view with dimensions: 41 (width), 17.8 (height), 118 (height), 7.3 (width), 13.2 (width), 9 (width), 8.4 (width), and 14 (width).

**DCA-18T**

Technical drawing of the DCA-F3C component. It includes a perspective view and a cross-sectional view with dimensions: 9 (height), 5 (height), 3.5 (height), 7 (height), 10 (width), 30 (width), 6 (height), 28 (height), 42.5 (height), 3 (height),  $\varnothing 4.3$  (pin diameter), and  $\varnothing 2$  (pin diameter).

**DCA-F3C**

## 电梯被动门开关 EDC-64-X3 门开关 IP53


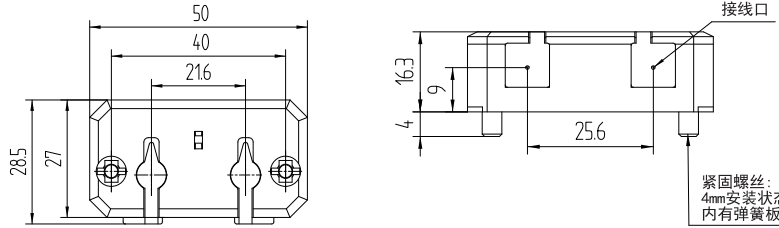

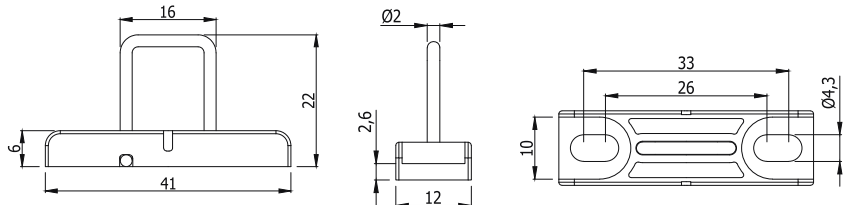

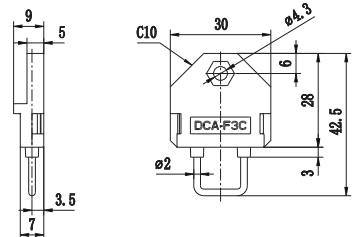
### 特性

- 用于电梯门关闭控制或使用在自动门关闭保护开关
- 动作没有声音
- 带有清洁触点使用寿命更长
- 开关带强制开离功能

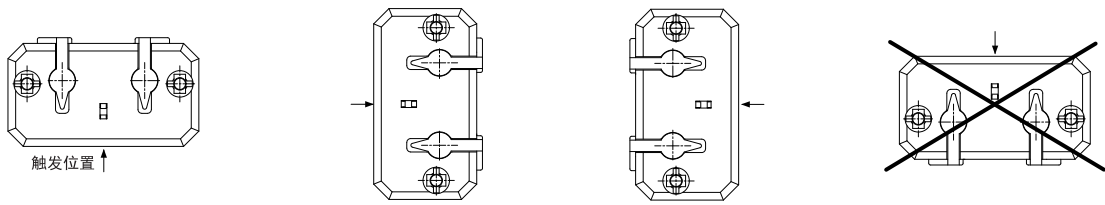
### 技术参数

外壳材料	透明强化纤维 PC (UL94-V0)
动作机构	不锈钢配 PC (UL94-V0) 外壳
触点材料	镀银铜铆钉
安装	2xM4 螺纹轧件紧固螺丝
触点形式	1NC
接线	M3.5 带防脱出垫片 (导线截面 0.5-1.5mm <sup>2</sup> )
工作行程	6mm
额定电流 (I <sub>th</sub> )	4A
额定工作电流/电压 (I <sub>e</sub> /U <sub>e</sub> )	1A/230VAC; 0.5A/200VDC
动作力	2N
环境温度	-30~+80°C (-22~176°F)
寿命	机械 10,000,000 次
防护等级	IP53
标准	2014/33/UE, EN 81-20/50, GB/T14048.5-2017

### 产品图片和安装尺寸:

<p>EDC-64-X3</p> 	 <p>接线口</p> <p>紧固螺丝: 4mm安装状态 内有弹簧板</p>
<p>DCA-22</p> 	
<p>DCA-F3C</p> 	

### 安装方向:



触发位置 ↑